

Entering Exception into Java Client

- 1) If java isn't installed, download it and install the latest version (jre 8 u45)
- 2) After installation of Java Client (Jre 8 u45), go into control panel
- 3) Find java client 32 bit and open it by double-clicking on it

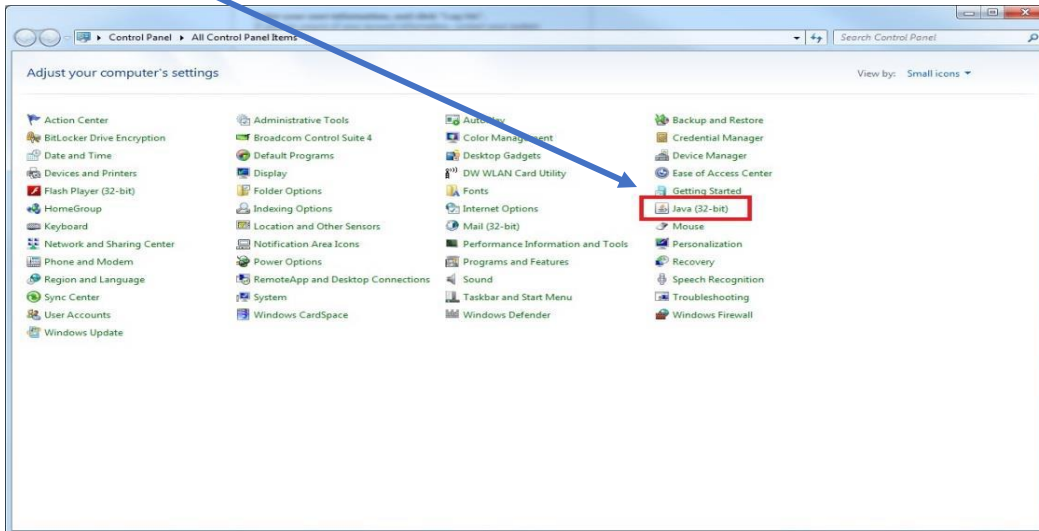


Image 1

- 4) Click on the Security tab (as seen in Image 2)

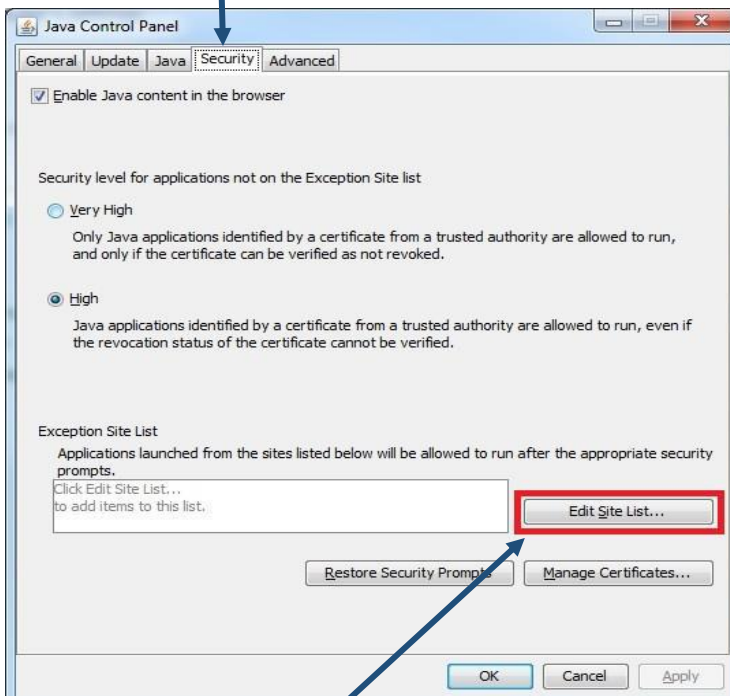


Image 2

- 5) Then click on the **Edit Site List** button

- 6) When the Exception Site List opens, click on the **Add** button

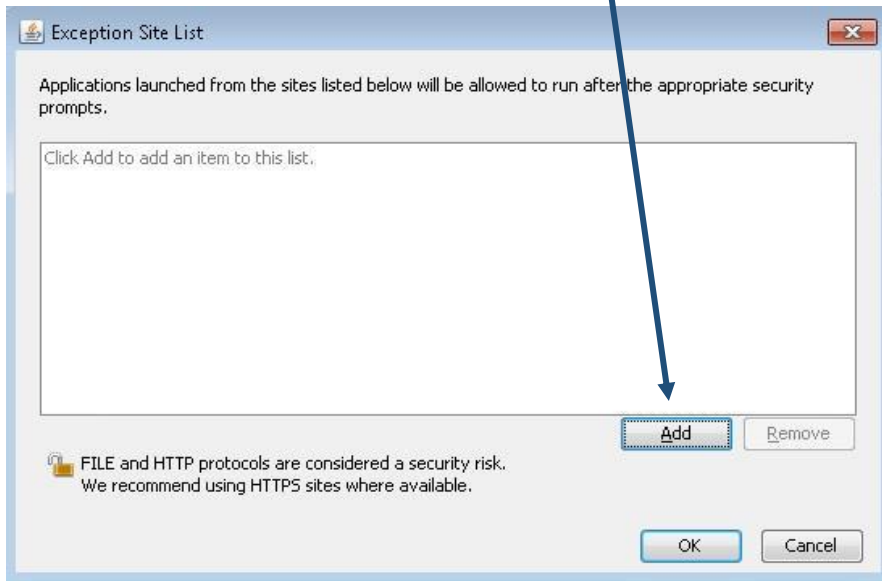


Image 3

- 7) In the next window, click in the location section and enter the information just as seen in **Image 3** below: <http://batman.sjeccd.org:8080/BOE/BI/logonNoSso.jsp>

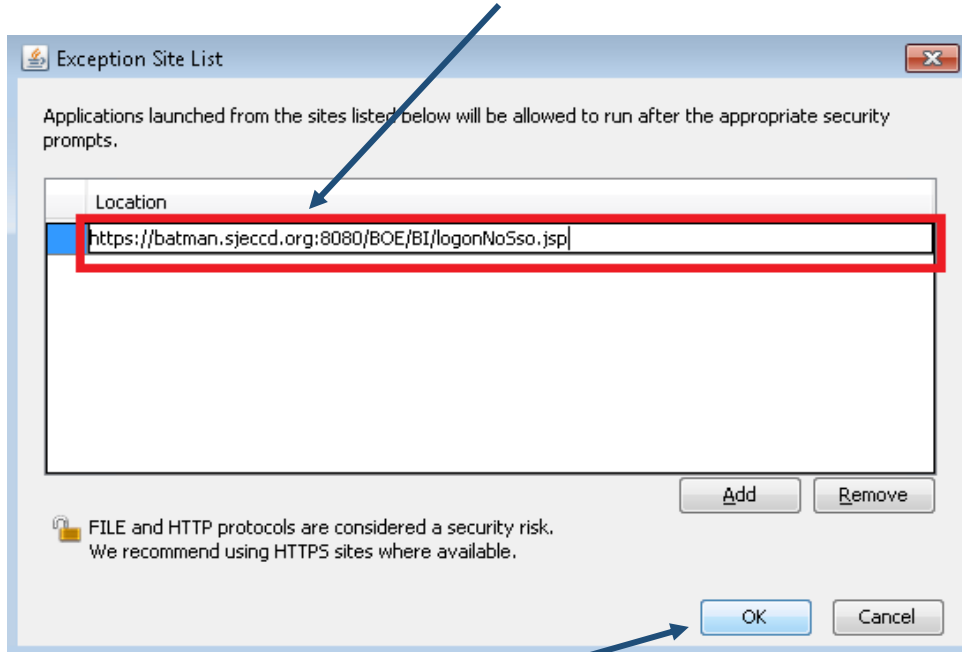


Image 4

- 8) Once done, click on the **OK** button.

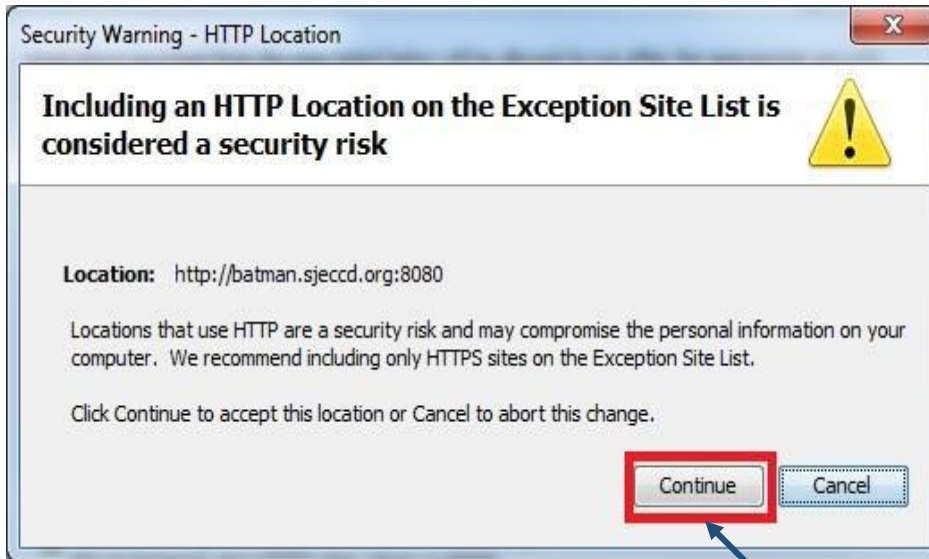


Image 5

- 9) If you get a Security warning as seen in *Image 5* above, click on the **Continue** button.
- 10) You should be taken back to the Security tab, click on the **Apply** button and then **OK** button.

